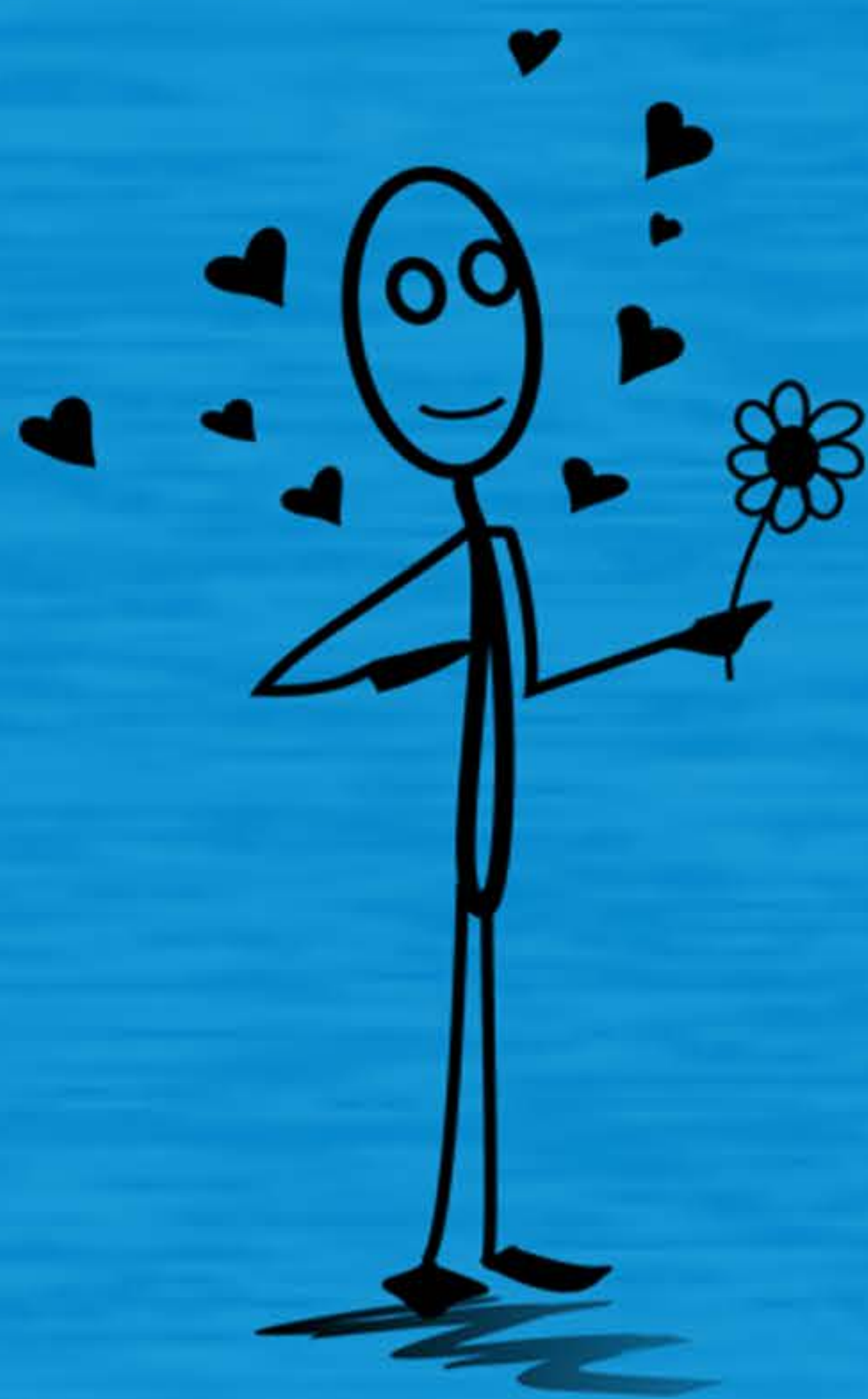


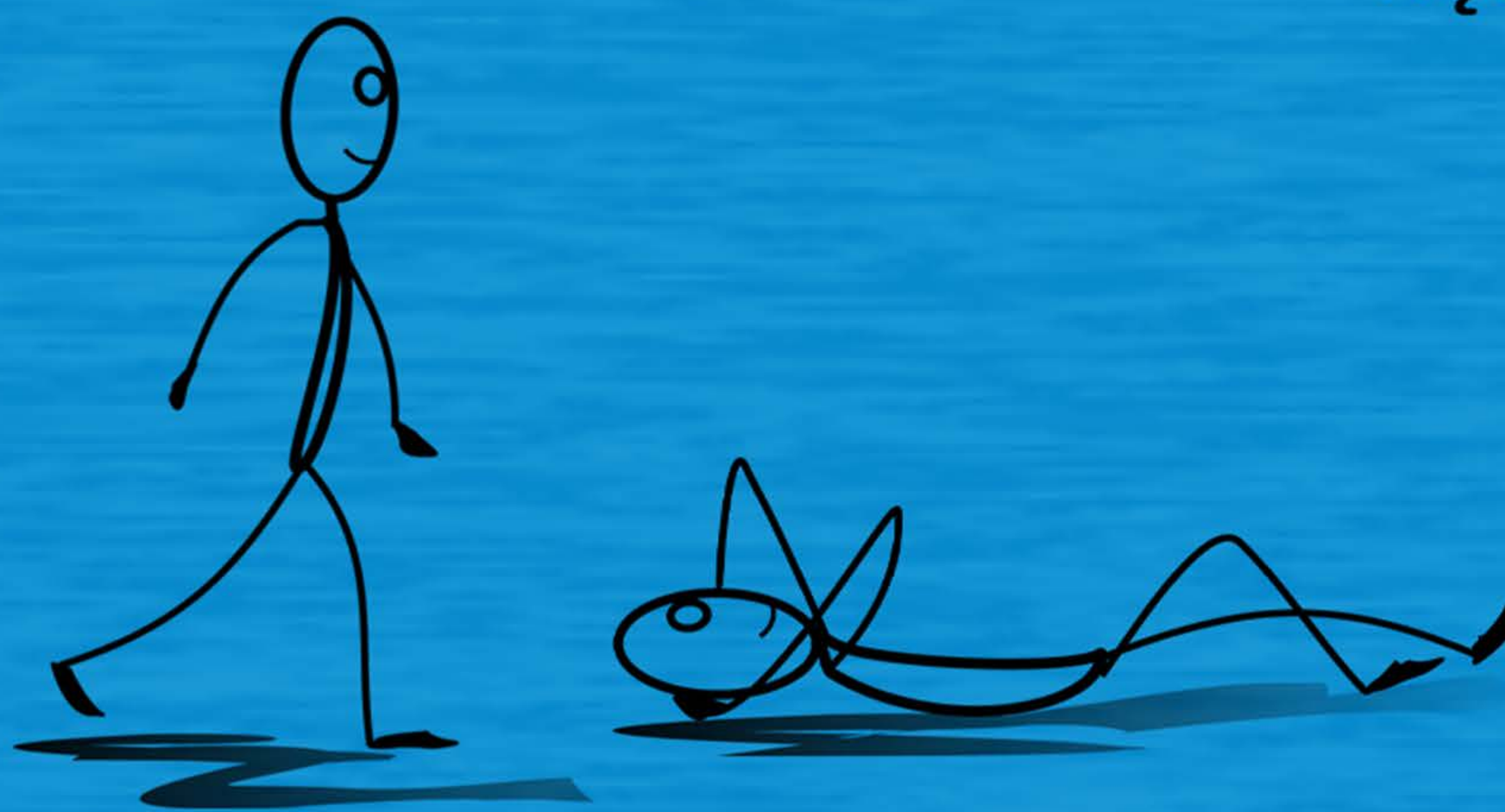
To make a sentence present tense you add a positional to the end of the sentence. A positional is added to the end of a sentence depending on the subject of the sentence. The positional will indicate if the subject is standing, sitting, or in a moving/lying down position. The suffixes are indicated with the figures below. These suffixes are used when speaking in 1st person singular.



-jee



-nək



-ək

Standing

1st person: **haje**

2nd person: **raje**

3rd person: **jee**

Sitting

1st person: **nək**

2nd person: **šənək**

3rd person: **nək**

Lying/Moving

1st person: **mək**

2nd person: **šawək**

3rd person: **ək**

\*Jee is spelled with a double vowel in third person form, except when you add a personal indicator such as ha- or ra- then the second "e" is dropped.





Hello (male)  
Hello (female)

Aho!  
Hąą!

When you ask someone how they are doing, you need to consider whether they are standing up, sitting down, lying down or moving. Above you see how to ask someone who is standing up.

When making a statement about yourself or others (e.g. how somebody is, or where somebody is at, or even what somebody is doing at the moment). You will often have to use a positional in your sentence. Positionals are not only used for people. They are also used to refer to objects based on their shape and location.